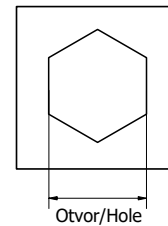
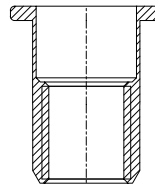
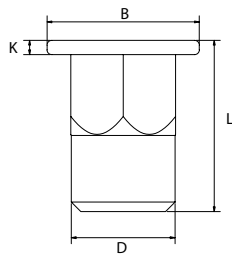


STTSE - Plochá hlava, částečně šestihenné tělo

Flat head, half-hex body



Závit Thread	Rozsah Grip range	Otvor -0 +0,1 Hole -0 +0,1	D -0,1/+0,07	B	K	L ±0,3
M4	0,5 - 2,0	6,0	5,9	9,0	0,8	11,0
M5	0,5 - 2,5	7,0	6,9	10,0	1,0	13,0
M6	0,5 - 3,0	9,0	8,9	12,7	1,35	15,0
M8	1,0 - 3,5	11,0	10,9	16,0	1,5	18,0
M10	1,0 - 3,5	13,0	12,9	18,0	1,7	21,0
M10	1,0 - 3,5	12,0	11,9	17,0	1,5	19,0
M12	1,0 - 4,0	15,0	14,9	20,0	1,7	23,0
M12	2,0 - 5,0	16,0	15,9	23,0	2,2	27,5