

BN 882

Grooved taper pins

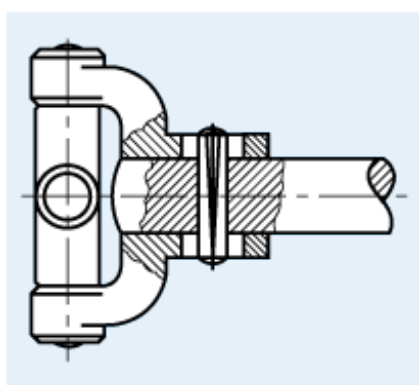
Steel 11SMnPb30

plain

- ~UNI 7586
- ~CSN 022170



Other supply possibilities on request:
- grooved pins made of stainless steel or plastic



As driving pin on a drive shaft

Article#	d ₁	±	c~	Tolerance hole	L
1337106	1,5	h9	0,2	H11	5
1337114					6
1337122					8
1337211	2	h9	0,25	H11	6
1337238					8
1337246					10
1337254					12
1337270					16
1337289					(18)
1337351	2,5	h9	0,3	H11	6
1337378					8
1337386					10
1337491	3	h9	0,4	H11	6
1337505					8
1337513					10

Article#	d ₁	±	c~	Tolerance hole	L
1337521	3	h9	0,4	H11	12
1337556					16
1337564					(18)
1337661	4	h11	0,5	H11	8
1337688					10
1337696					12
1337718					(14)
1337726					16
1337734					(18)
1337742					20
1150790					25
1337793					30
1337823					40
1337947	5	h11	0,63	H11	20
1150812					25
1338005					30
1150820					35
1338218	6	h11	0,8	H11	30
1338226					(32)
1150847					35
1338242					40