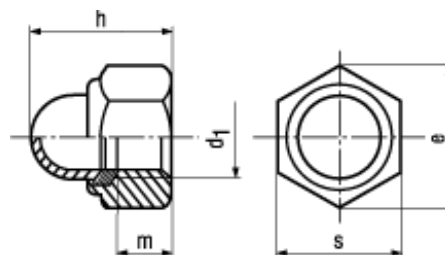




DIN 986

6

**BN 167****Prevailing torque type hex domed cap nuts**

with polyamide insert

Steel 6

zinc plated blue

- ~UNI 5722

M10; M12: wrench size according to ISO on request

Article#	d <sub>1</sub>	e min.	h	m	s
1095447	M4	7,66	9,6	2,9	7
1095455	M5	8,79	10,5	4,4	8
1095463	M6	11,05	12	4,9	10
1095471	M8	14,38	14	6,44	13
1095498	M10	18,9	18,1	8,04	17
1095501	M12	21,1	22,5	10,37	19
1095536	M16	26,75	27,5	14,1	24